

NiCd D Cell 4Ah Batteries

Description

Mackwell Nickel Cadmium (NiCd) type D cell 4Ah batteries have been developed especially for Emergency Lighting applications, designed to a high quality to provide a 4 year life as required by EN 60598-2-22 and ICEL1001, when operated within the temperature ranges specified in this document.

The batteries are available in a variety of configurations and are supplied with red and black 'flying lead' wire assemblies with either shrouded spade terminals or 2-pin polarised plugs to allow simple push-in connection to our Emergency control modules. For quick and simple installation the batteries are provided with end caps or in some cases mounted on a metal plate.



- High-temperature cells rated for continuous use at +55°C
- High Energy retention
- Designed to provide 3 hour duration over a 4 year life
- Welded connections between cells
- Simple connection using leads having either a polarised plug or push-on spade terminals
- Provided with plastic end caps or mounted on metal plate for simple installation
- Available in various configurations
- Recyclable construction
- High quality design complying with IEC/EN 61951-1

email. sales@mackwell.com

www.mackwell.com

tel. +44 (0) 1922 458 255

Vigo Place, Aldridge, West Midlands, WS9 8UG, England

NiCd D Cell 4Ah Batteries

Batteries should not be stored in a discharged state and a maximum storage time of three years in an ambient temperature of +25°C is recommended. If this is exceeded it may be necessary to fully charge and discharge the batteries several times to restore their full working capacity.

If using a battery pack not supplied by Mackwell, ensure that it is correctly rated for the application.

General Specifications:

Nominal single cell voltage:	1.2V
Case temperature range *:	+10°C to +55°C
Rated minimum capacity:	4Ah
Single cell dimensions:	62mm long x 32mm diameter (Typical)
Single cell weight:	120g (Typical)
Battery spade terminals:	6.3 x 0.8mm (positive), 4.7 x 0.5mm (negative) welded to ends of cell
End cap fixing clearance:	4mm

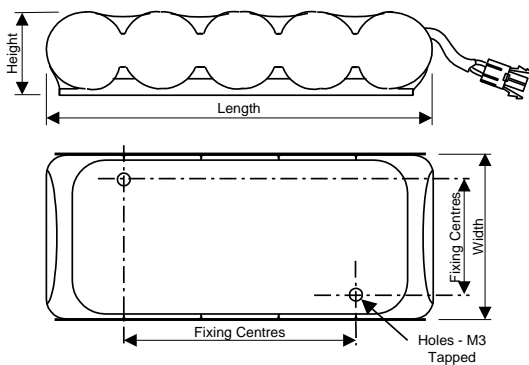
* It is important that the specified temperatures are not exceeded or the operational life of the cells will be reduced.

Battery Configurations:

The following tables show the variety of battery configurations that are available:

D Type Cells: Side By Side Packs			
Catalogue Number:	B215	B217	B219
No. of Cells	3	4	5
Nominal Volts	3.6V	4.8V	6.0V
Length x Width (mm)	100 x 65	135 x 65	165 x 65
Height (mm)	35	35	35
Fixing Centres (mm)	40 x 32	40 x 64	40 x 96
Weight (g)	450	600	700
Connection method	2-pin polarised plug		
Connecting cable length	250mm		
Mounting scheme	Mounting plate (with M3 tapped holes)		

Side by side configuration on mounting plate



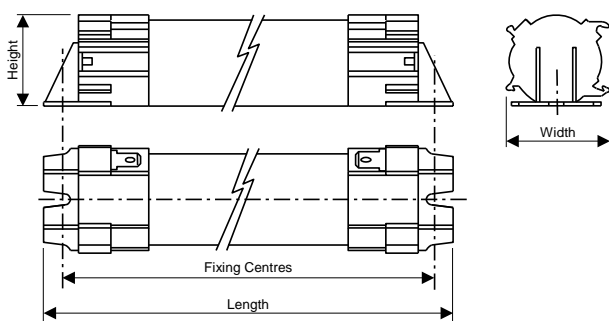
NiCd D Cell 4Ah Batteries

D Type Cells: Single Sticks					
Catalogue Number:	B613	B644	B616	B618	B778
No. of Cells	2	3	4	5	6
Nominal Volts	2.4V	3.6V	4.8V	6.0V	7.2V
Length x Width (mm)	155 x 38	215 x 38	275 x 38	335 x 38	395 x 38
Height (mm)	35	35	35	35	35
Fixing Centres (mm)	140	200	260	320	380
Weight (g)	300	400	600	650	700
Connection method	Spade terminals				
Connecting cable length	500mm				
Mounting scheme	End caps				

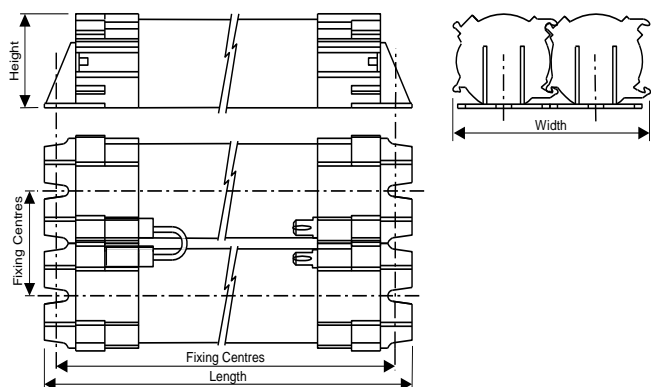
D Type Cells: Twin Sticks							
Catalogue Number:	B422*	B824	B624*	B776	B576*	B812	B633
No. of Cells	1 + 1	2 + 2	2 + 2	3 + 3	3 + 3	4 + 4	5 + 5
Nominal Volts	2.4V	4.8V	4.8V	7.2V	7.2V	9.6V	12.0V
Length x Width (mm)	70 X 76	155 X 76	128 X 76	215 X 76	187 X 76	275 X 76	335 X 76
Height (mm)	37	35	40	35	40	35	35
Fixing Centres (mm)	50	37 X 140	100	37 X 200	160	37 X 260	37 X 320
Weight (g)	300	550	600	850	850	1100	1200
Connection method	2-pin plug	Spade terminals					
Connecting cable length	250mm	500mm					
Mounting scheme	End caps						

*Note that B422, B624 & B576 batteries use different end caps with a central fixing location.

Single stick configuration drawing



Twin stick configuration drawing (B824, B776, B812 & B633)



We reserve the right to alter specifications without prior notice.